

KIT #8181500 8150

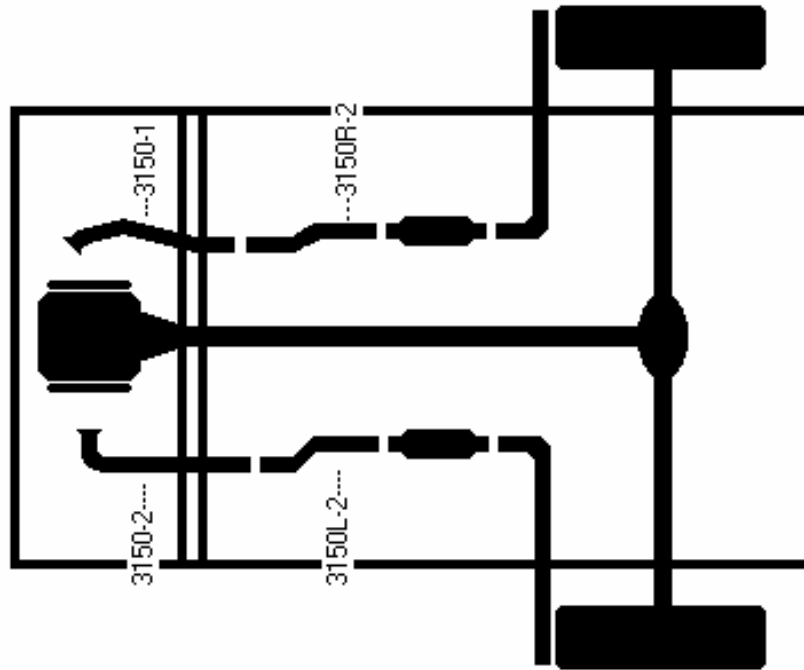
1965-1976 FORD PICKUP 1/2 & 3/4 TON 2WD V-8 332-390 EXCEPT 351

NOTE: THIS DUAL KIT WILL NOT FIT SUPER CABS.

DANGER WARNING: SHOULD THE PURCHASER DECIDE TO INSTALL THIS EXHAUST PRODUCT AT HOME, BE WARNED THAT PLEASURE CAR OR LIGHT DUTY TRUCK/VAN "BUMPER" JACKS ARE INTENDED FOR EMERGENCY USE ONLY. THE USE OF FRAME CONTACT JACK STANDS IN CONJUNCTION WITH A FLOOR JACK AS MAIN SUPPORT IS HIGHLY RECOMMENDED TO MINIMIZE ACCIDENTAL DROPPING OF A VEHICLE WHILE THE INSTALLATION PROCEEDS.

HARDWARE KIT:

- | | |
|-------------------------|----------------------------------|
| 4) LB7 HANGERS | 1) #3150-2 LEFT MANIFOLD PIPE |
| 4) SNAPPER GROMMETS | 1) #3150-1 RIGHT MANIFOLD PIPE |
| 4) 5/16" X 1-1/2" BOLTS | 1) #3150R-2 RIGHT EXTENSION |
| 4) 5/16" NUTS | 1) #3150L-2 LEFT EXTENSION |
| 8) 2-1/4" CLAMPS | 1) RIGHT TAIL PIPE #T996 |
| | 1) LEFT TAIL PIPE #T997 |
| | 2) GLASS PACK MUFFLERS (3018502) |



LIMITATION OF LIABILITY-DISCLAIMERS: THE REGULATION OF EMISSIONS PRODUCTION, NOISE LEVELS AND SAFETY STANDARDS IS UNDERTAKEN BY THE FEDERAL GOVERNMENT, EACH OF THE FIFTY STATE LEGISLATURES, AND BY MANY LOCAL MUNICIPALITIES, TOWNS AND COUNTIES.

THE MANUFACTURER MAKES NO WARRANTIES OF MERCHANTABILITY, OF FITNESS FOR A PARTICULAR PURPOSE, OR THAT ITS PRODUCTS ARE APPROVED FOR GENERAL USE, OR THAT ITS PRODUCTS COMPLY WITH LAWS, REGULATIONS OR ORDINANCES IN THE STATES WHERE THEY MAY BE SOLD TO THE ULTIMATE PURCHASER, THE CONSUMER.

THE ENTIRE RISK AS TO THE CONFORMITY OF THIS PRODUCT IN ANY SUCH STATE AND AS TO REPAIR, SHOULD THE PRODUCT PROVE TO BE DEFECTIVE OR NON-CONFORMING, IS ON THE RETAIL PURCHASER, THE BUYER, THE ULTIMATE CONSUMER, OF SUCH PRODUCT AND IT IS NOT UPON THE SELLER, DISTRIBUTOR, OR MANUFACTURER.

IN THIS CONNECTION, THE RETAIL PURCHASER, THE BUYER, THE ULTIMATE CONSUMER ASSUMES THE BURDEN OF THE ENTIRE COST OF ANY AND ALL NECESSARY SERVICE, ALTERATIONS AND OR REPAIR.

THE FOREGOING STATEMENT LIMITS THE LIABILITY OF THE MANUFACTURER.

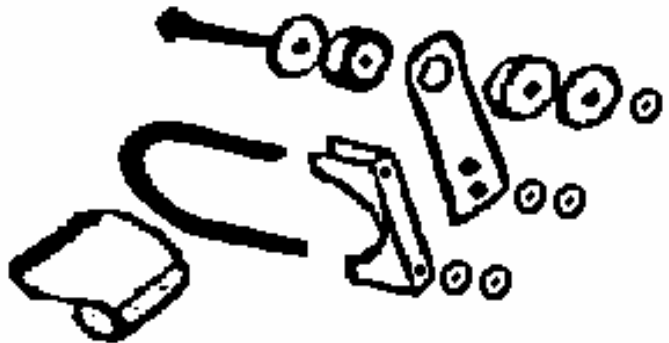
CALIFORNIA VEHICLE CODE SECTION 27156 PROHIBITS THE ADVERTISING, OFFERING FOR SALE, OR INSTALLATION OF ANY DEVICE WHICH MODIFIES A VEHICLE'S EMISSION CONTROL SYSTEM. THIS PRODUCT IS THEREFORE NOT LEGAL FOR SALE OR USE IN CALIFORNIA ON VEHICLES EQUIPPED WITH CATALYTIC CONVERTERS.

KIT # 8181500 8150

INSTALLATION INSTRUCTIONS:

NOTE: DO NOT TIGHTEN ANY CLAMPS OR NUTS UNTIL THE LAST STEP!!

- 1) REMOVE THE OLD EXHAUST SYSTEM. SAVE THE OLD GASKETS AND FLANGES FROM THE ORIGINAL FRONT PIPE.
- 2) INSTALL THE LEFT (#3150-2--FLARED PIPE WITH 1 BEND) AND RIGHT (#3150-1--FLARED PIPE WITH 2 BENDS) MANIFOLD PIPES USING THE ORIGINAL GASKETS AND FLANGES. YOU WILL NEED TO USE YOUR ORIGINAL MANIFOLD STUDS AND NUTS. TIGHTEN ONLY ENOUGH TO HOLD IN PLACE.
- 3) INSTALL THE LEFT (#3150L-2) AND RIGHT (#3150R-2--LONGER STRAIGHT SECTION THAN 3150L-2) FRONT EXTENSION PIPES TO THE MANIFOLD PIPES USING 2-1/4" CLAMPS. CLAMP LIGHTLY INTO PLACE.
- 4) INSTALL THE GLASS PACK MUFFLERS ONTO THE FRONT EXTENSION PIPES USING 2-1/4" CLAMPS. NOTE: THE EXHAUST SHOULD RUN OVER, AND NOT INTO, THE LOUVERS OF THE GLASS PACKS FOR PROPER SOUND CONTROL. ROTATE THE MUFFLERS FOR CLEARANCE FROM THE DRIVE SHAFT AND FRAME.
- 5) LOCATE THE CROSS MEMBER IN THE FRAME--EITHER IN FRONT OF OR IN THE REAR OF THE MUFFLERS. DRILL A 5/16" HOLE AND MOUNT THE LB7 HANGERS TO THE FRAME USING THE INCLUDED 5/16" X 1-1/2" BOLTS, NUTS, AND SNAPPER GROMMET. CLAMP THE EXHAUST SYSTEM TO THE HANGERS.
- 6) INSTALL THE LEFT AND RIGHT TAIL PIPES TO THE MUFFLERS USING 2-1/4" CLAMPS.
- 7) MOUNT THE REMAINING LB7 HANGERS AND HARDWARE TO THE FRAME NEAR THE REAR EXIT LOCATION OF THE TAIL PIPES. CLAMP THE TAIL PIPES TO THE HANGERS USING 2-1/4" CLAMPS.
- 8) MAKE SURE THAT ALL THE PARTS OF THE SYSTEM ARE CLEAR OF FRAME MEMBERS, ALL HOSES, SUSPENSION, AND BRAKE AND FUEL LINES. STARTING AT THE EXHAUST MANIFOLDS, TIGHTEN ALL CONNECTIONS AND NUTS. MAKE SURE ALL PARTS ARE CLEAR AND WILL NOT LEAK OR RATTLE. AFTER SEVERAL DAYS OF DRIVING RETIGHTEN ALL BOLTS.



Heartthrob exhaust systems are manufactured by Heartthrob Exhaust--Litchfield, MN

www.heartthroboxhaust.com

320-693-0222

Email us at mike@heartthroboxhaust.com with any questions.

BUILD SHEET FOR: DUAL KITS W/ GLASSPACKS

PART #: 8181500 OR 8150

- 1) #3150-2 LEFT MANIFOLD PIPE
- 1) #3150-1 RIGHT MANIFOLD PIPE
- 1) #3150R-2 RIGHT EXTENSION
- 1) #3150L-2 LEFT EXTENSION
- 1) RIGHT TAIL PIPE #T996
- 1) LEFT TAIL PIPE #T997
- 2) GLASS PACK MUFFLERS (3018502)
- 1) HARDWARE KIT

INSPECTED BY: _____

DATE: _____

INSPECTED BY: _____

DATE: _____

BUILD SHEET FOR: DUAL KITS W/ GLASSPACKS

PART #: 8181500 OR 8150

- 1) #3150-2 LEFT MANIFOLD PIPE
- 1) #3150-1 RIGHT MANIFOLD PIPE
- 1) #3150R-2 RIGHT EXTENSION
- 1) #3150L-2 LEFT EXTENSION
- 1) RIGHT TAIL PIPE #T996
- 1) LEFT TAIL PIPE #T997
- 2) GLASS PACK MUFFLERS (3018502)
- 1) HARDWARE KIT

INSPECTED BY: _____

DATE: _____

INSPECTED BY: _____

DATE: _____